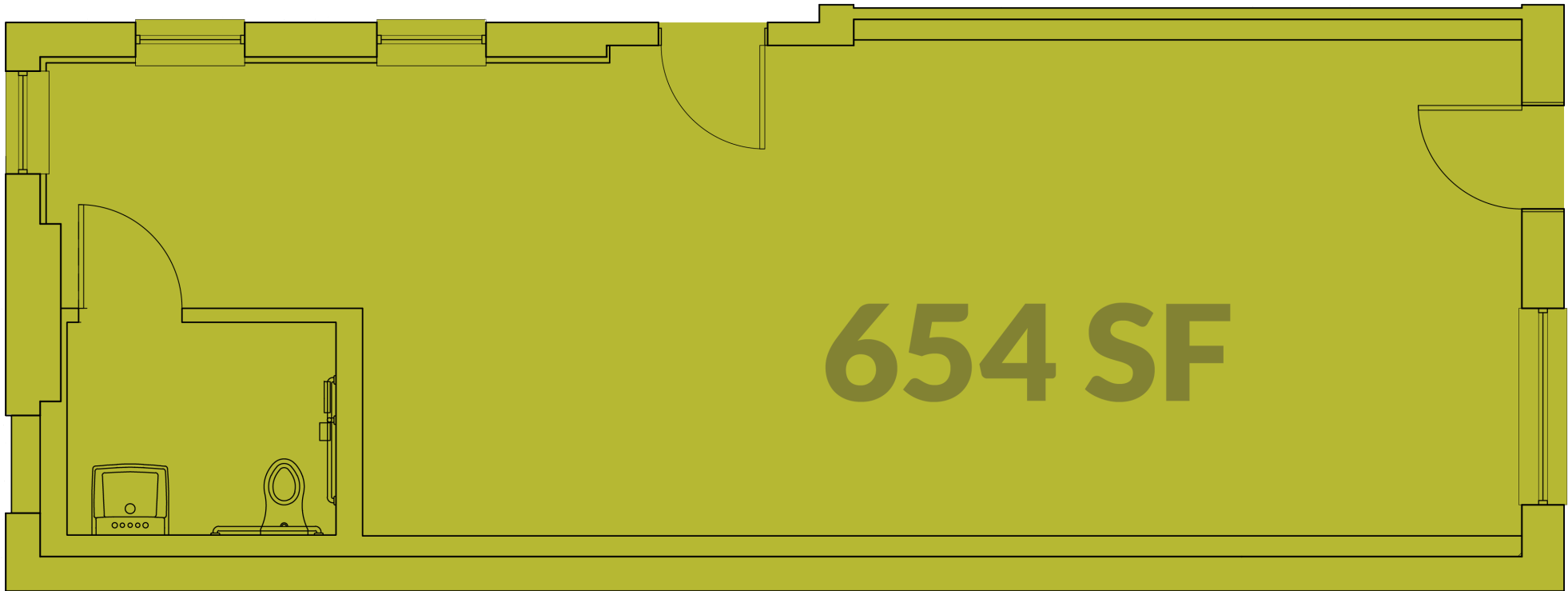


COMMERCIAL PROPERTY

1447 Walnut Street

This property at 1447 Walnut Street features a street-level space close to Liberty Street. In the heart of Over-the-Rhine, this 654 square-foot space is part of the Willkommen project and is best suited to accommodate an office.





This brochure is for illustration purposes only and not part of a legal, binding contract. Information is subject to change without notice.

Please consult with a 3CDC representative for complete and up-to-date information 02/2020.