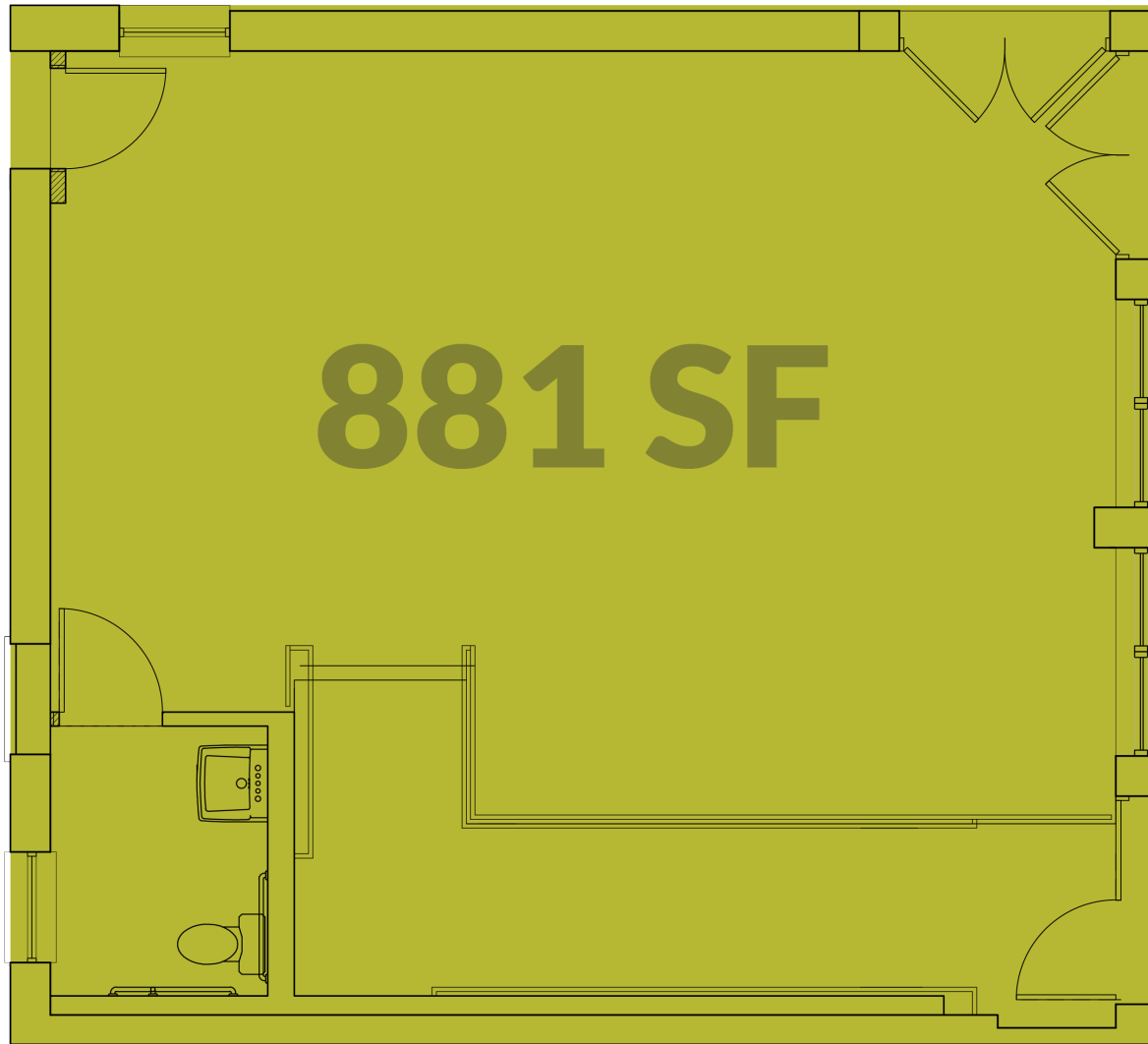


COMMERCIAL PROPERTY

18 E. 15th Street

Located in the heart of Over-the-Rhine, this 881 square foot space is perfectly situated near the bars, restaurants and shops on Vine Street, as well as in very close proximity to parking.





This brochure is for illustration purposes only and not part of a legal, binding contract. Information is subject to change without notice.

Please consult with a 3CDC representative for complete and up-to-date information 02/2020.