

# THE STANLEY

The Stanley, Unit 302  
915-917 Vine Street

The Stanley is located in the center of Downtown at the new Court Street Plaza. This unit features an open floorplan and faces Vine Street.

## Unique Features

- Tall ceilings
- Light hardwood floors
- Washing/Dryer hookup
- Open floorplan
- GE stainless steel appliance suite

## Pricing / Details

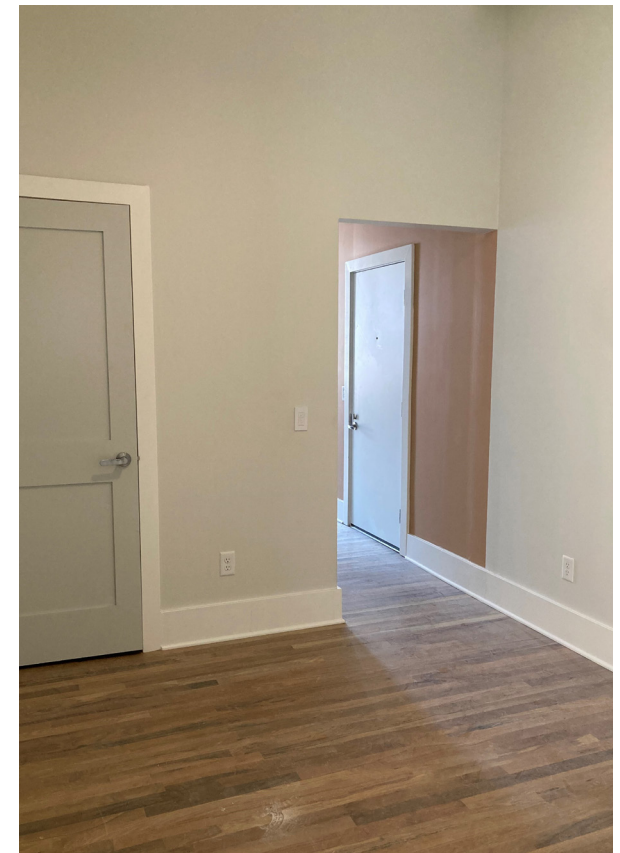
PRICE  
\$245,000.00

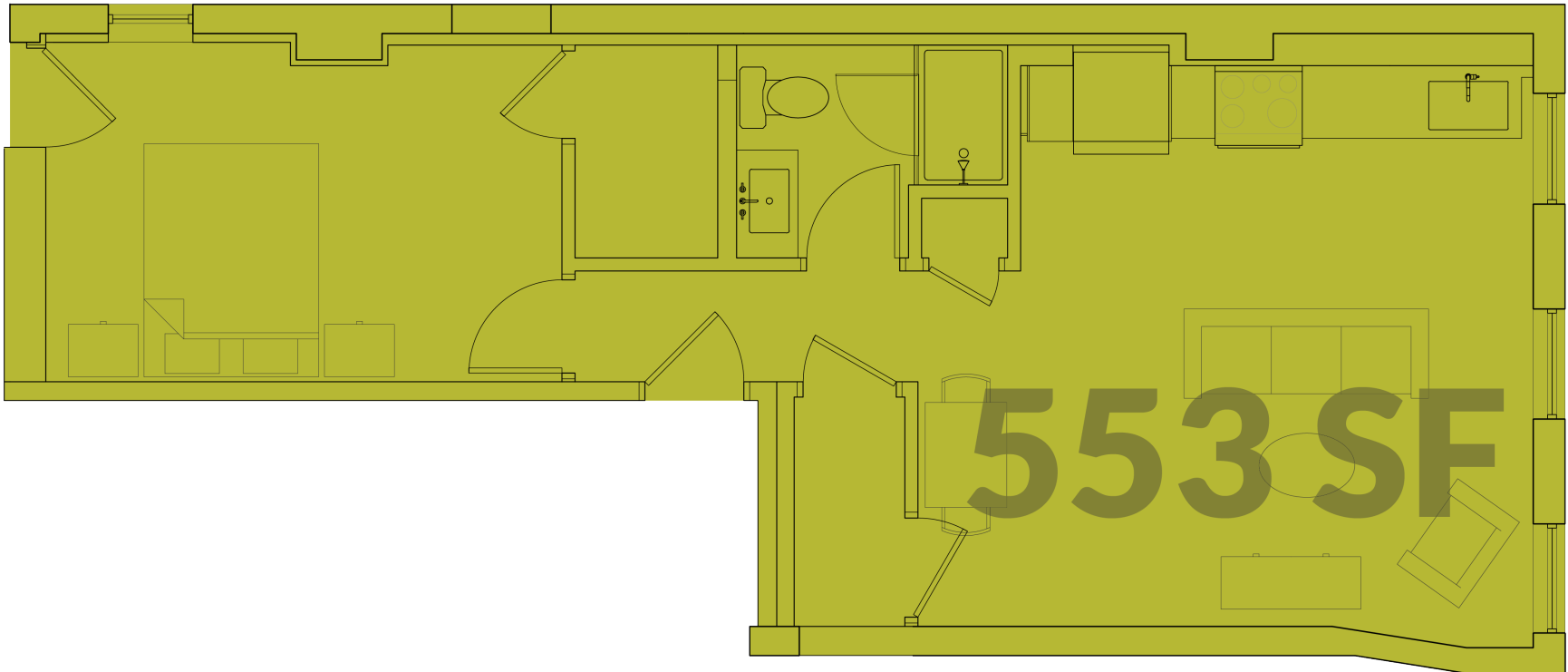
BEDROOMS  
1

BATHROOMS  
1

HOA  
\$338

OUTDOOR SPACE





This brochure is for illustration purposes only and not part of a legal, binding contract. Information is subject to change without notice.

Please consult with a 3CDC representative for complete and up-to-date information 02/2020.