

GOSLING FLATS

Gosling Flats, Unit 5F
26 W. 15th Street

Gosling Flats is a two-building complex, located on the corner of Race and 15th streets in Over-the-Rhine near Taft's Brewery and the recently completed Rennen & Beecher Flats. This 674-square-foot unit features one bedroom and one bathroom above the completed commercial space on 15th Street.

Unique Features

- Sleek finishes
- Cabinetry custom-fabricated by Brush Factory
- Stainless steel appliances
- Modern backsplashes

Pricing / Details

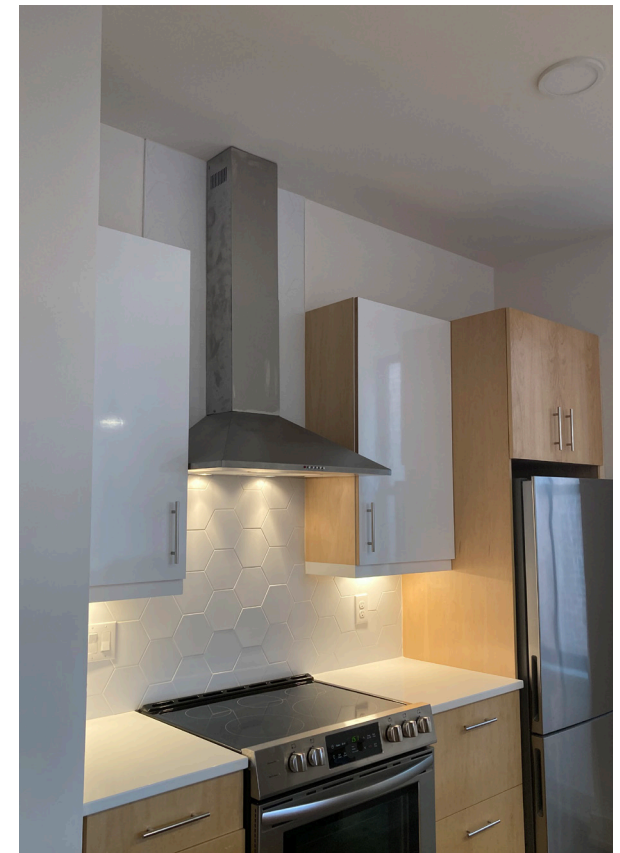
PRICE
\$270,000.00

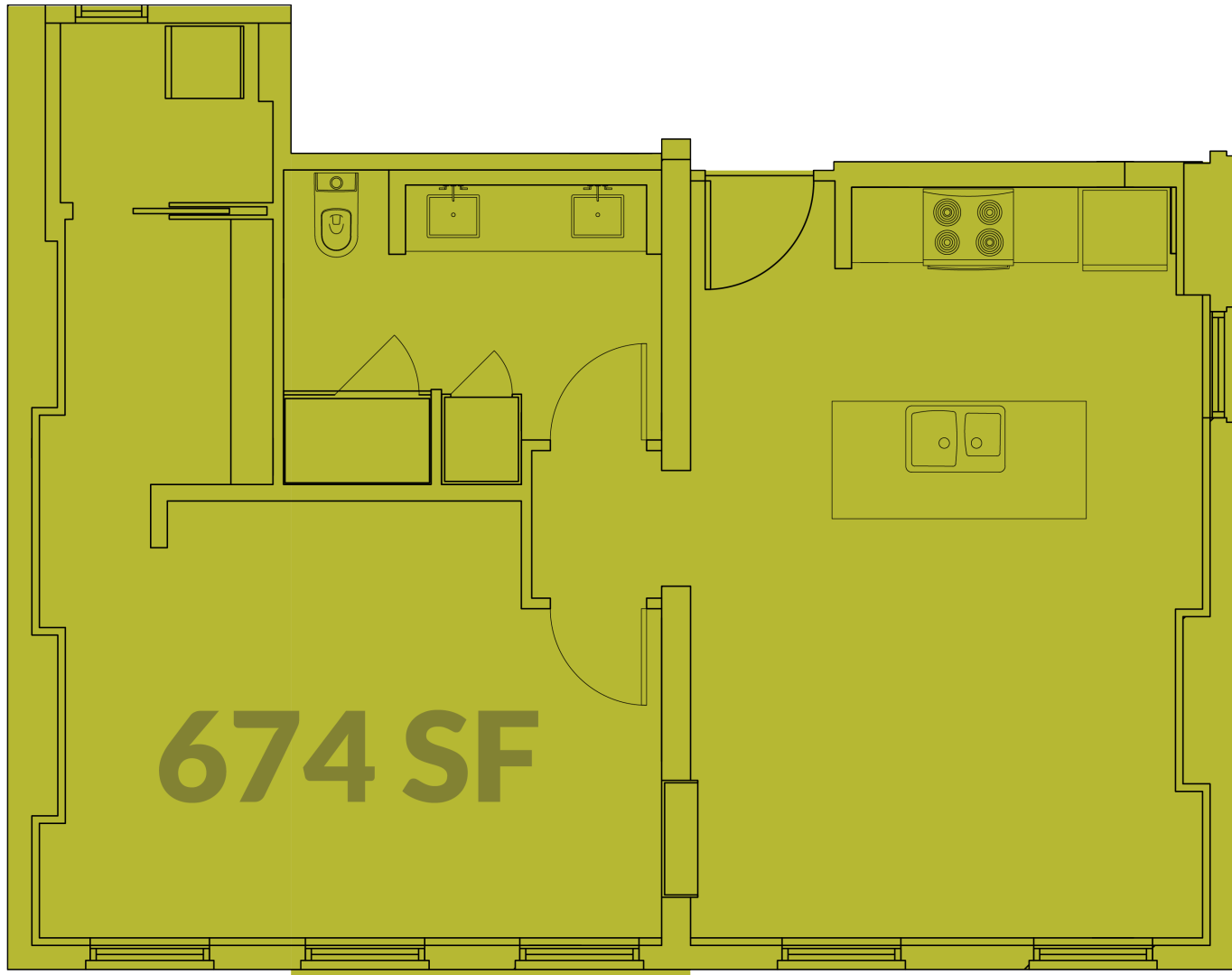
BEDROOMS
1

BATHROOMS
1

HOA
\$226.77

PARKING
Washington Park Garage





This brochure is for illustration purposes only and not part of a legal, binding contract. Information is subject to change without notice.

Please consult with a 3CDC representative for complete and up-to-date information 08/2021.