

# GOSLING FLATS

Gosling Flats, Unit 4F  
26 W. 15th Street

Gosling Flats is a two-building complex, located on the corner of Race and 15th streets in Over-the-Rhine near Taft's Brewery and the recently completed Rennen & Beecher Flats. This 640-square-foot unit features one bedroom and one bathroom above the completed commercial space on 15th Street.

## Unique Features

- Sleek finishes
- Cabinetry custom-fabricated by Brush Factory
- Open floorplan
- Tall windows

## Pricing / Details

PRICE  
\$279,900.00

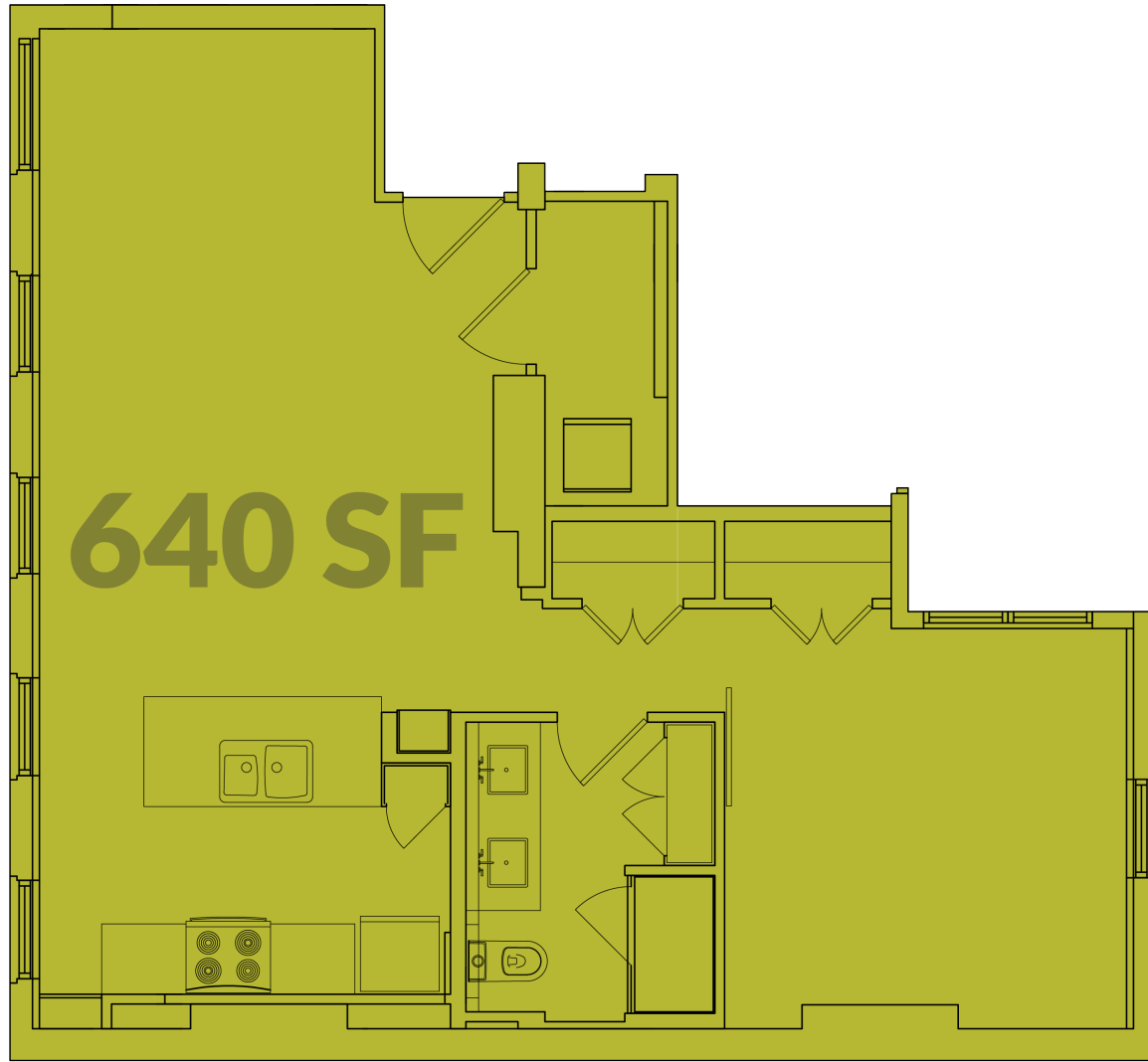
BEDROOMS  
1

BATHROOMS  
1

HOA  
\$226.77

PARKING  
Washington Park Garage





This brochure is for illustration purposes only and not part of a legal, binding contract. Information is subject to change without notice.

Please consult with a 3CDC representative for complete and up-to-date information 08/2021.