

COMMERCIAL PROPERTY

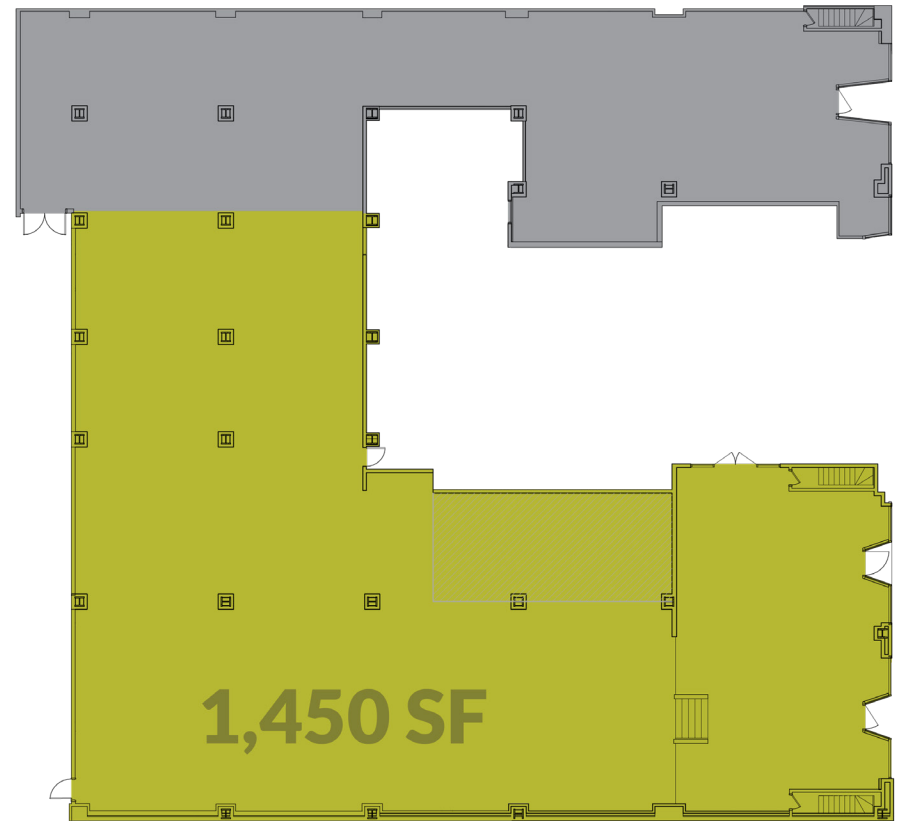
617 Vine Street

Each available storefront is located on the 600 block of Vine Street, minutes away from Fountain Square with a unique connection to the Hampton Inn and Suites.

Space A: 1,450 square feet

Space B: 1,340 square feet





This brochure is for illustration purposes only and not part of a legal, binding contract. Information is subject to change without notice.

Please consult with a 3CDC representative for complete and up-to-date information 02/2020.