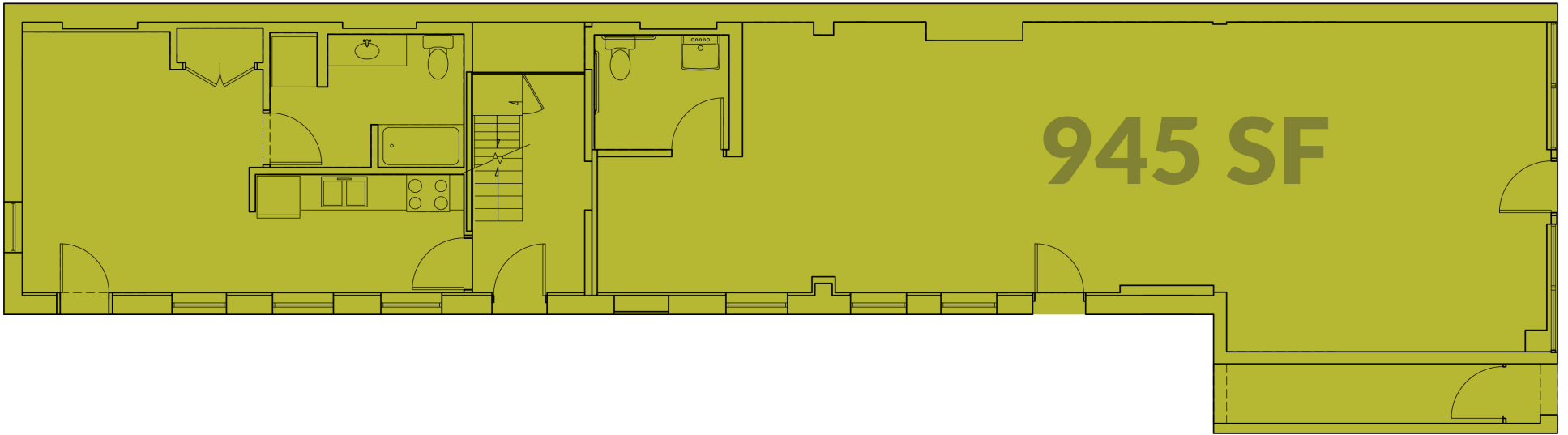


# COMMERCIAL PROPERTY

1611 Race Street

This 945-square-foot commercial space is part of the Willkommen project, and is located a block away from Findlay Market.





This brochure is for illustration purposes only and not part of a legal, binding contract. Information is subject to change without notice.

Please consult with a 3CDC representative for complete and up-to-date information 02/2020.