

B-Side

B-Side, Unit B2
15 W Fifteenth Street

Welcome to B-Side! Tucked away in a residential area one block from Vine Street, these units feel secluded but close to all of the action. These bright, airy units feature modern, eat-in kitchens and livable floorplans. Industrial touches complete the look.

Unique Features

- Townhome floorplan (2 levels)
- Sleek white kitchen
- Modern tile backsplashes
- Kitchen island
- Wood floors
- Stainless steel appliances
- Washer/dryer

Pricing / Details

PRICE
\$259,900.00

BEDROOMS

2

BATHROOMS

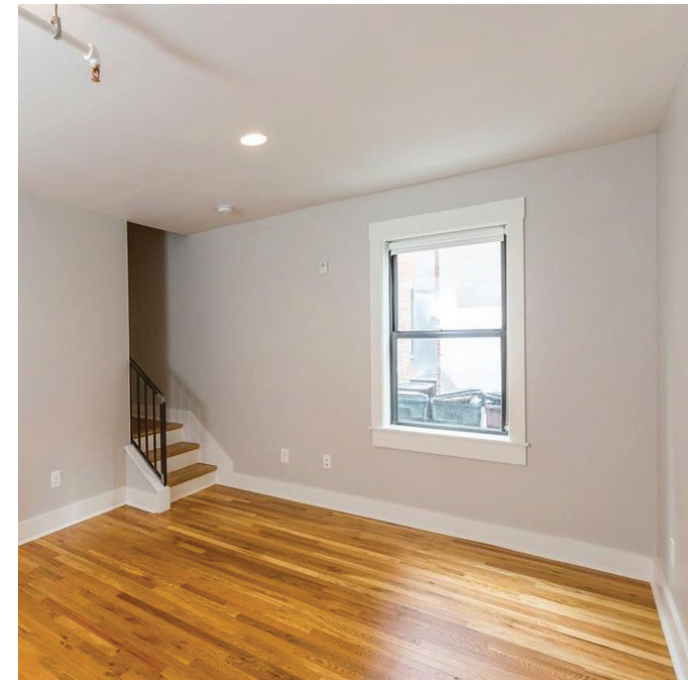
1

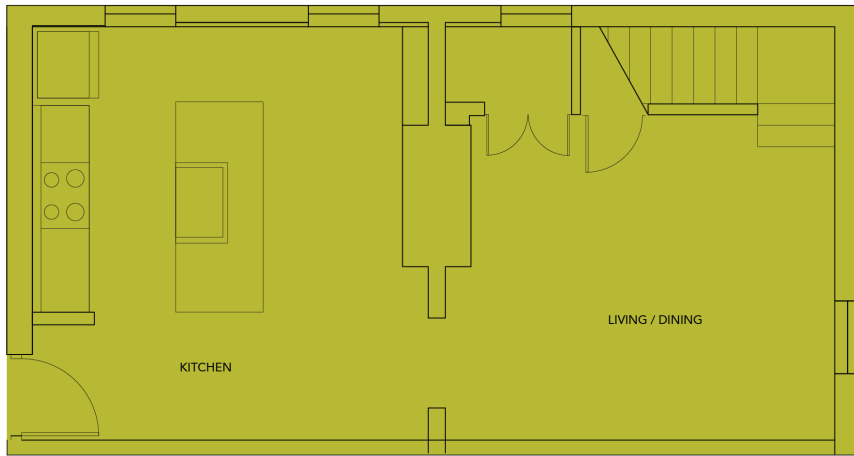
HOA
\$327

OUTDOOR SPACE

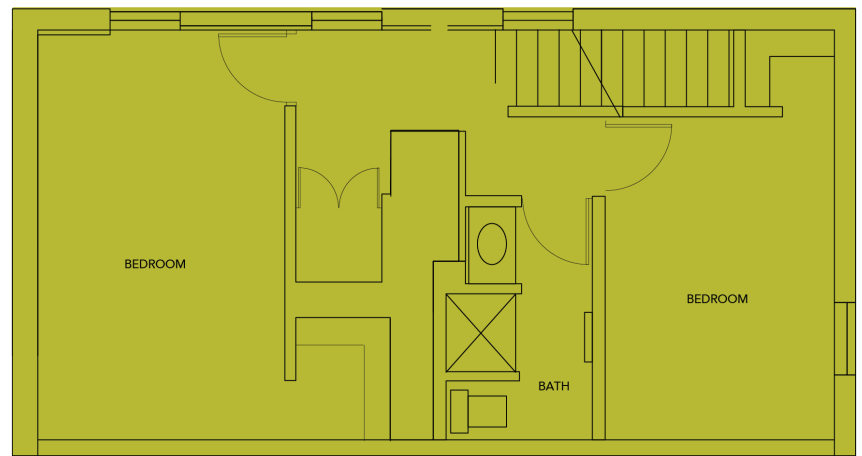
PARKING

Washington Park Garage





1ST FLOOR



2ND FLOOR

This brochure is for illustration purposes only and not part of a legal, binding contract. Information is subject to change without notice.

Please consult with a 3CDC representative for complete and up-to-date information 02/2020.