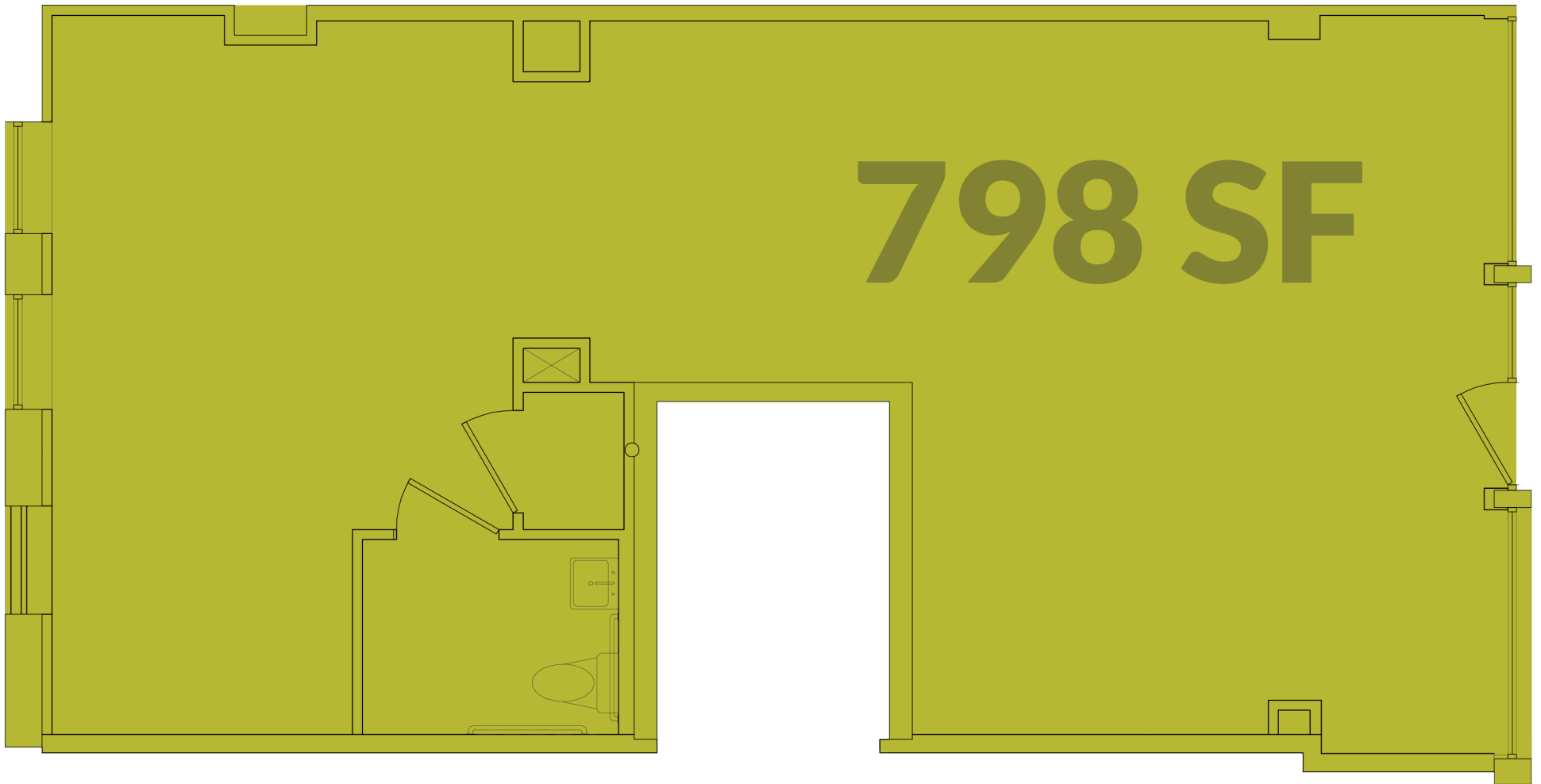


COMMERCIAL PROPERTY

1315 Walnut Street

Available now, this 798 SF commercial space is located on Walnut Street in the heart of Over-the-Rhine. In addition to the street-level space, a basement is also included.





This brochure is for illustration purposes only and not part of a legal, binding contract. Information is subject to change without notice.

Please consult with a 3CDC representative for complete and up-to-date information 09/2023.