

COMMERCIAL PROPERTY

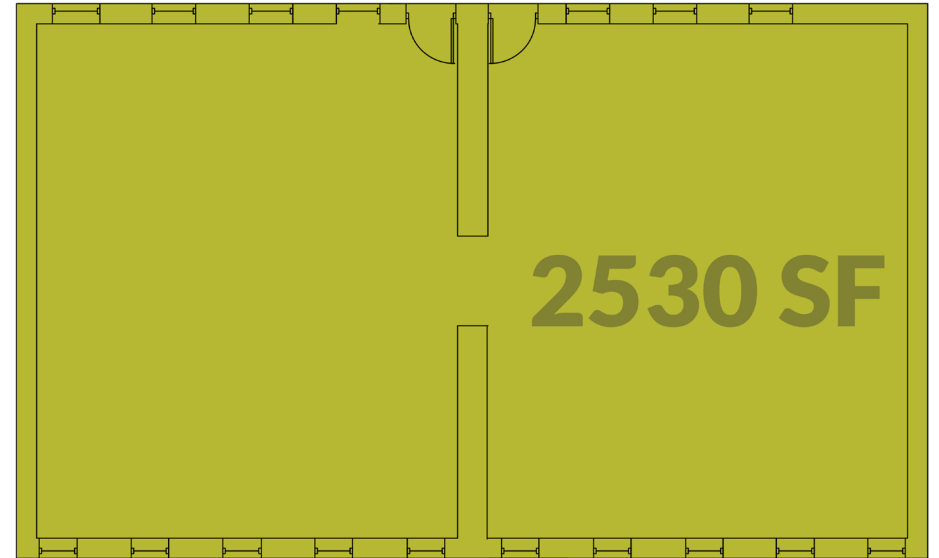
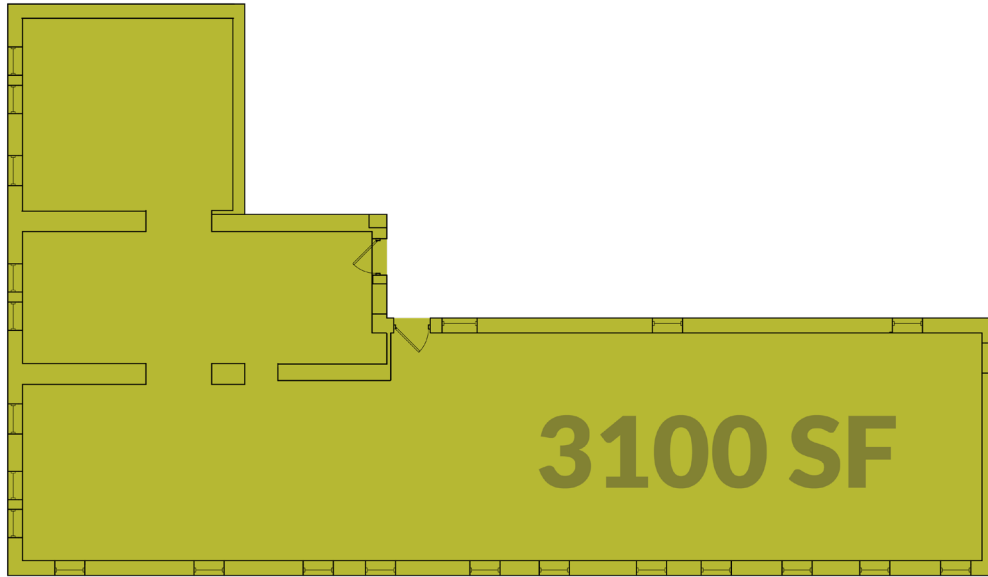
1404 Race Street, 201

This available commercial space on the second floor of Saengerhalle is located at the corner of 14th and Race streets, and offers beautiful views of Washington Park's civic lawn across the street.

Unit 201 - 3,100 SF

Unit 202 - 2,530 SF





This brochure is for illustration purposes only and not part of a legal, binding contract. Information is subject to change without notice.

Please consult with a 3CDC representative for complete and up-to-date information 02/2020.