



CINCINNATI
CENTER CITY
DEVELOPMENT
CORPORATION

Quick Links

Over-the-
Rhine

Fountain
Square

CEF &
CNMF

HOME : ABOUT 3CDC : NEWSROOM : ECONOMIC INCLUSION : CONTACT US

Over-the-Rhine

Trideca Lofts

1232 Vine St.

- Gateway Condos
- Gateway Arts Building
- Ducanson Lofts
- Duveneck Flats
- Bremen Lofts
- Centennial Row
- Trideca
- Mottainai
- 14th and Vine at Trinity Flats
- Belmain
- Good Fellows
- Falling Wall
- City Home
- OTR Links
- OTR Work Group

Trideca Lofts is the latest completed condo project by Urban Sites. Amenities include exposed brick and ductwork, contemporary details, balconies, secured parking, elevator access and amazing city views. Joseph Williams Home, a contemporary furniture store is located in the first floor commercial space.

Essential Facts

Location: 13th and Vine Streets
Buildings: 1
Units: 9/3 available
Commercial Space: 3,230 SF
Total Development Cost: \$3.38 million
Completion Date: September 2008

[Click here for more information](#)

Last Update 1-23-2009



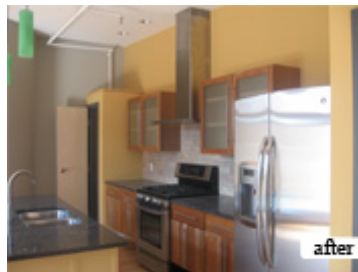
[View Larger Image](#)



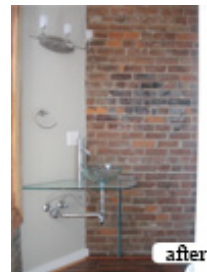
[View Larger Image](#)



[View Larger Image](#)



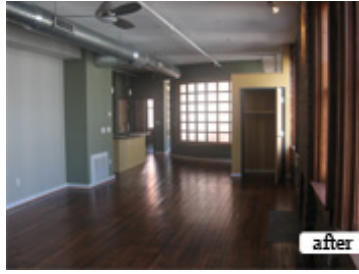
[View Larger Image](#)



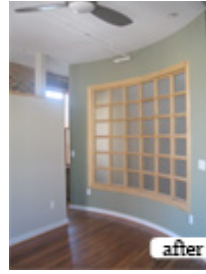
[View Larger Image](#)



[View Larger Image](#)



[View Larger Image](#)



[View Larger Image](#)



[View Larger Image](#)

[HOME](#) : [ABOUT 3CDC](#) : [NEWSROOM](#) : [ECONOMIC INCLUSION](#) : [CONTACT US](#)

Copyright ©2005 3CDC. All Rights Reserved. Privacy Policy
Powered by editspot.