



CINCINNATI  
CENTER CITY  
DEVELOPMENT  
CORPORATION

Quick Links

Over-the-Rhine

Fountain Square

CEF & CNMF

HOME : ABOUT 3CDC : NEWSROOM : ECONOMIC INCLUSION : CONTACT US

Over-the-Rhine

- Gateway Condos
- Gateway Arts Building
- Duncanson Lofts
- Duveneck Flats
- Bremen Lofts
- Centennial Row
- Trideca
- Mottainai
- 14th and Vine at Trinity Flats
- Belmain
- Good Fellows
- Falling Wall
- City Home
- OTR Links
- OTR Work Group



## Duncanson Lofts

1201-15 Vine Street

Duncanson Lofts include 25 top of the line condominiums and over 9,000 square feet of commercial space in six adjoining buildings. Each of these unique buildings provides opportunities for a wide variety of layouts and styles. Additional amenities include elevator access, secure parking, and stunning bay windows. Commercial tenants include [Mica 12/v](#), [Metronation](#), The Little Mahatma, Switch, Incredible Creations and Lavomatic, the newest restaurant in the Jean Robert de Cavel restaurant group. The project was developed in partnership with [B2B Equities](#) and the [Northpointe Group](#).

Essential Facts

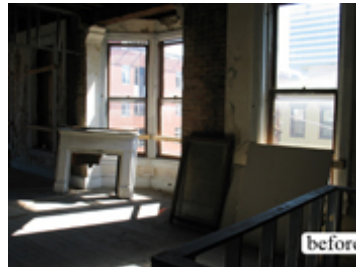
- Location:** 12th and Vine streets
- Buildings:** 6
- Units:** 25/8 available
- Commercial Space:** 9,745 SF
- Total Development Cost:** \$7.4 million
- Completion Date:** July 2007

[Click here for more information](#)

Last Update 1-23-2009



[View Larger Image](#)



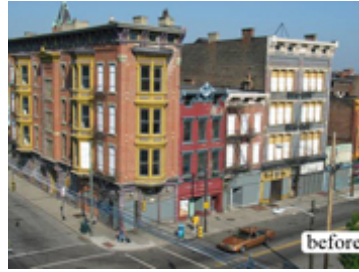
[View Larger Image](#)



[View Larger Image](#)



[View Larger Image](#)



[View Larger Image](#)



[View Larger Image](#)



[View Larger Image](#)



[View Larger Image](#)



[View Larger Image](#)



[View Larger Image](#)



[View Larger Image](#)



[View Larger Image](#)

[HOME](#) : [ABOUT 3CDC](#) : [NEWSROOM](#) : [ECONOMIC INCLUSION](#) : [CONTACT US](#)

Copyright ©2005 3CDC. All Rights Reserved. Privacy Policy  
Powered by editspot.