



CINCINNATI  
CENTER CITY  
DEVELOPMENT  
CORPORATION

Quick Links

Over-the-  
Rhine

Fountain  
Square

CEF &  
CNMF

HOME : ABOUT 3CDC : NEWSROOM : ECONOMIC INCLUSION : CONTACT US

Over-the-Rhine

- Gateway Condos
- Gateway Arts Building
- Ducanson Lofts
- Duveneck Flats
- Bremen Lofts
- Centennial Row
- Trideca
- Mottainai
- 14th and Vine at Trinity Flats
- Belmain
- Good Fellows
- Falling Wall
- City Home
- OTR Links
- OTR Work Group



## Centennial Row

1122-28 Race Street

Centennial Row is named after the Centennial Exposition of 1888 held in Cincinnati's Washington Park. This development is conveniently situated caddy-corner to Washington Park, which will be expanded and renovated starting in fall 2009. It is also immediately across the street from the new \$72 million state-of-the-art School for Creative and Performing Arts, which opens in Sept. 2010. Each unit offers unique design, top quality construction and finishes, secure parking and easy access to the central business district. Centennial Row stands out for its highly sophisticated interior designs, curved walls and staircases, as well as skylights.

Essential Facts

- Location:** 12<sup>th</sup> and Race streets
- Buildings:** 4
- Units:** 8/7 available
- Commercial Space:** None
- Total Development Cost:** \$1.6 million
- Completion Date:** September 2007

[Click here for more information](#)

Last Update 1-23-2009



[View Larger Image](#)



[View Larger Image](#)



[View Larger Image](#)



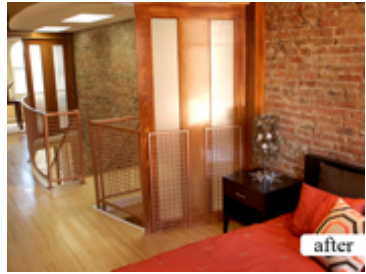
[View Larger Image](#)



[View Larger Image](#)



[View Larger Image](#)



[View Larger Image](#)



[View Larger Image](#)

[HOME](#) : [ABOUT 3CDC](#) : [NEWSROOM](#) : [ECONOMIC INCLUSION](#) : [CONTACT US](#)

Copyright ©2005 3CDC. All Rights Reserved. Privacy Policy  
Powered by editspot.